

# STORE FOR LEASE



**2022 CROPSEY AVE, BROOKLYN, NY 11214**

FOR MORE INFORMATION ON THIS PROPERTY PLEASE CALL OUR OFFICE: **718.517.8700**

# PROPERTY DETAILS

## LOCATION INFO

**BTW. 20TH AVE AND  
BAY 25TH ST**

## NEIGHBORHOOD

**BATH BEACH**

## BLOCK & LOT

**06467-0001**

## ZONING

**R6**

## SIZE

**750 SF + BASEMENT**

## ASKING RENT

**\$5,700 - MODIFIED  
GROSS LEASE**

## COMMENTS

- **15' FRONTAGE**
- **GREAT SIGNAGE OPPORTUNITY**
- **STORE FOR LEASE IN A  
SHOPPING PLAZA**
- **FRONT PARKING**
- **SURROUNDED BY MAJOR  
BUSINESSES**
- **CLOSE TO MAJOR PUBLIC  
TRANSPORTATION**
- **GREAT EXPOSURE**

**2022 CROPSEY AVE, BROOKLYN, NY 11214**

**FOR MORE INFORMATION ON THIS PROPERTY PLEASE CALL OUR OFFICE: 718.517.8700**



# LOCATION OVERVIEW



TRANSPORTATION

X28

B64

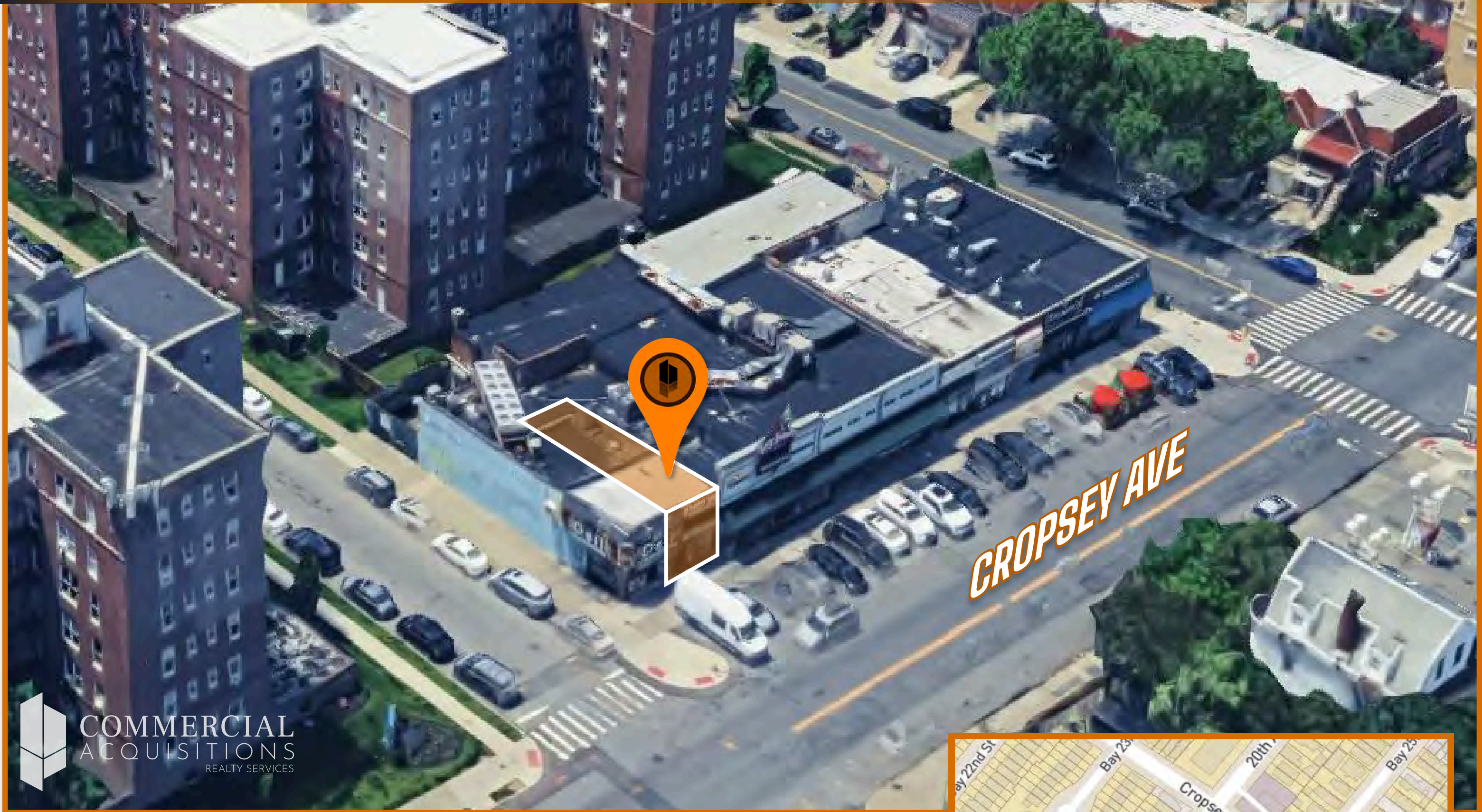
D

Walk Score  
90

Transit Score  
79

FOR MORE INFORMATION ON THIS PROPERTY PLEASE CALL OUR OFFICE: 718.517.8700





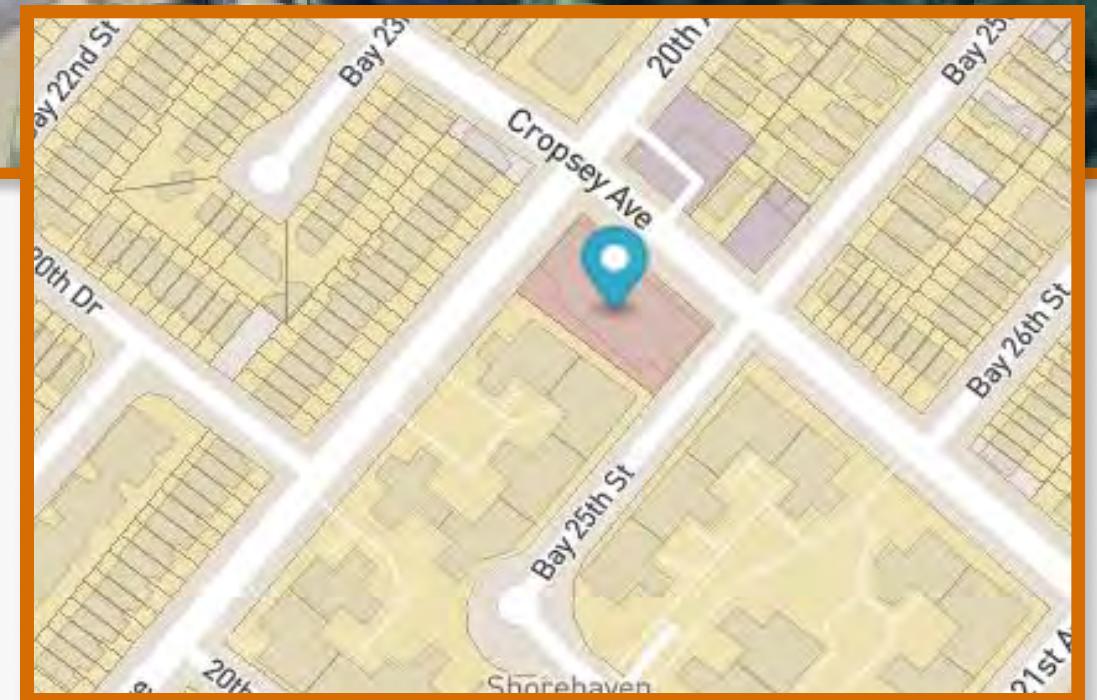
## CONTACT EXCLUSIVE BROKER



**ARSEN ATBASHYAN**

**CELL: 917.939.3760**

**ARSEN@COMMERCIALACQ.COM**



**FOR MORE INFORMATION ON THIS PROPERTY PLEASE CALL OUR OFFICE: 718.517.8700**

**© 2500 CONEY ISLAND AVENUE, 2ND FLOOR, BROOKLYN, NY 11223 ☎ 718.954.1363 ✉ DENIS@COMMERCIALACQ.COM 🌐 COMMERCIALACQ.COM**

COMMERCIAL ACQUISITIONS INC. HAS MADE EVERY EFFORT TO OBTAIN THE INFORMATION REGARDING THESE LISTINGS FROM SOURCES DEEMED RELIABLE. HOWEVER, WE CANNOT WARRANT THE COMPLETE ACCURACY THEREOF SUBJECT TO ERRORS, OMISSIONS, CHANGE OF PRICE, RENTAL OR OTHER CONDITIONS, PRIOR SALE, LEASE OR FINANCING, OR WITHDRAWAL WITHOUT NOTICE. WE RECOMMEND TO THE BUYER THAT ANY INFORMATION, WHICH IS OF SPECIAL INTEREST, SHOULD BE OBTAINED THROUGH INDEPENDENT VERIFICATION. ALL MEASUREMENTS MAY BE APPROXIMATE.