



**2858 W 5TH ST, BROOKLYN, NY 11224**



## PROPERTY DETAILS

### LOCATION INFO

CORNER OF NEPTUNE AVE  
& W 5TH ST

### NEIGHBORHOOD

CONEY ISLAND

### BLOCK & LOT

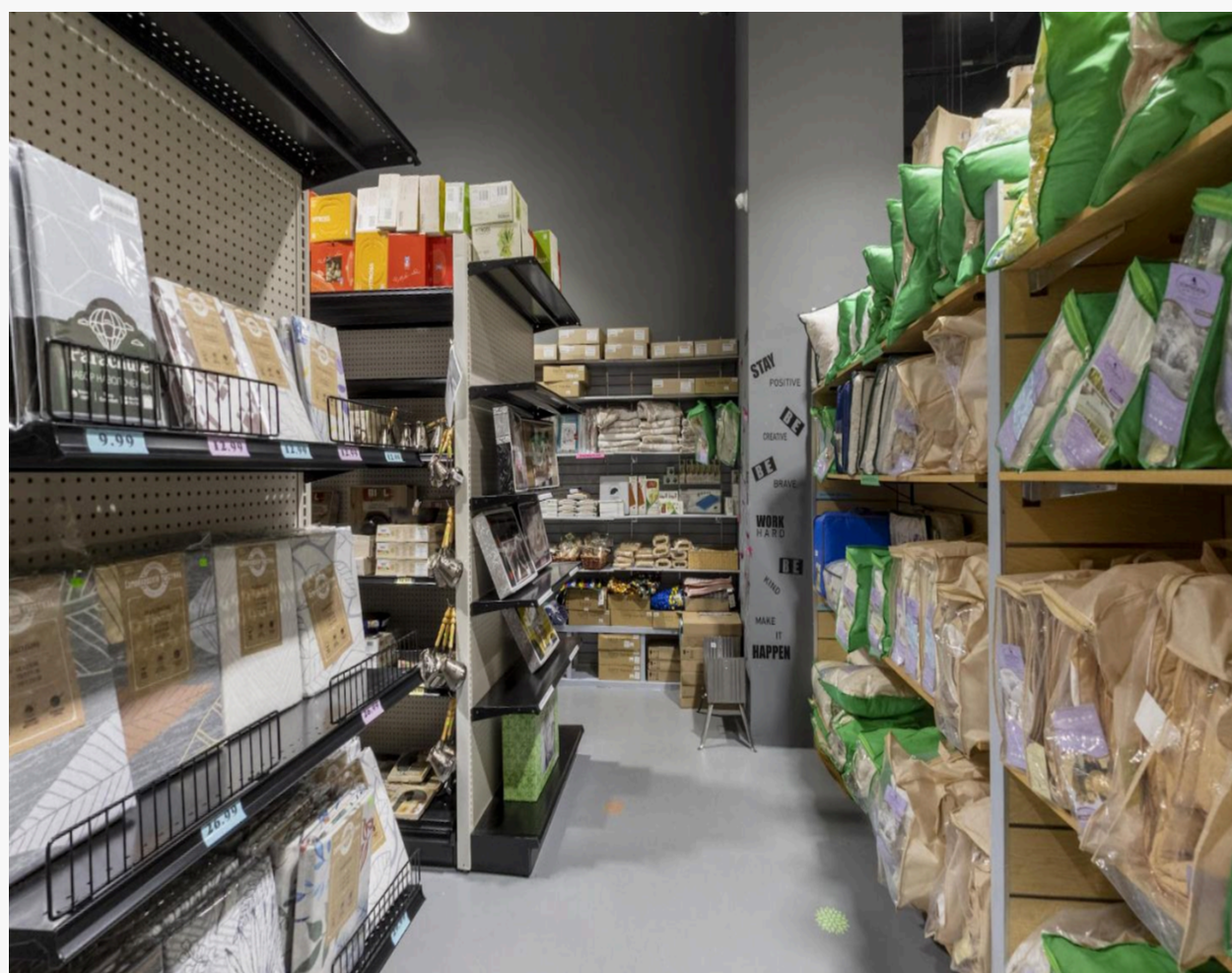
07273-7501

### ZONING

R6, C1-2, OP

### SIZE

2,268 SF



## ASKING PRICE

**\$60 PSF**

## CONTACT EXCLUSIVE BROKER

ARSEN ATBASHYAN

917-939-3760

ARSEN@COMMERCIALACQ.COM

FOR MORE INFORMATION ON THIS PROPERTY PLEASE CALL OUR OFFICE: **718.517.8700**

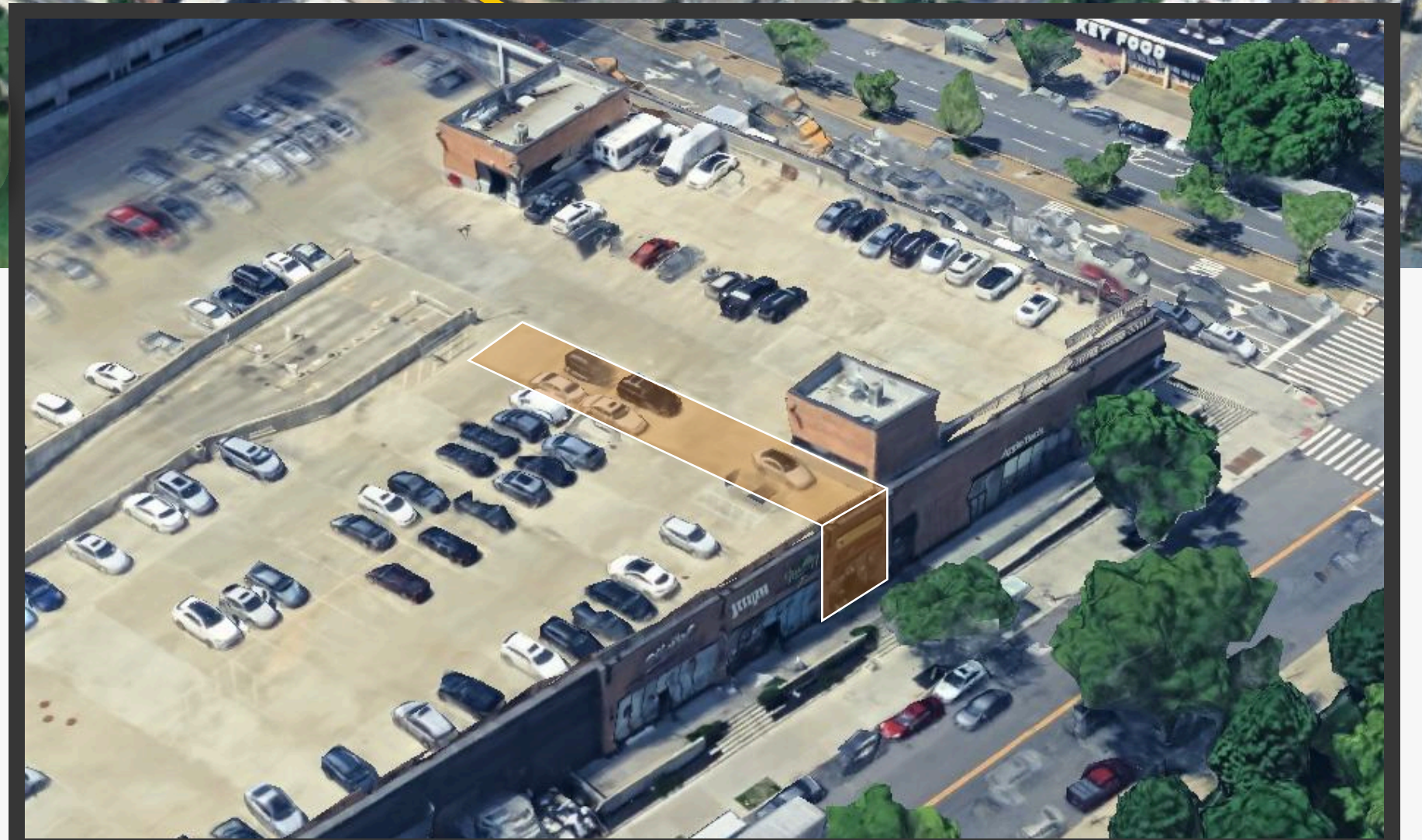




2858 W 5TH ST, BROOKLYN,  
NY 11224

## PROPERTY COMMENTS

- 20' FRONTAGE
- 17' CEILING
- ROOFTOP PARKING AVAILABLE
- MULTIPLE HVAC CLIMATE ZONES
- OCCUPANCY OCTOBER 2025
- NEXT DOOR TO 60,000 SF OF COMMERCIAL AND 500 APARTMENT RESIDENTIAL UNIT DEVELOPMENT
- LOCATED IN A HIGH-TRAFFIC AREA
- CLOSE TO PUBLIC TRANSPORTATION



SATELLITE VIEW

### NEIGHBOURING TENANTS & AMENITIES



### CONTACT EXCLUSIVE BROKER

ARSEN ATBASHYAN  
917-939-3760  
ARSEN@COMMERCIALACQ.COM

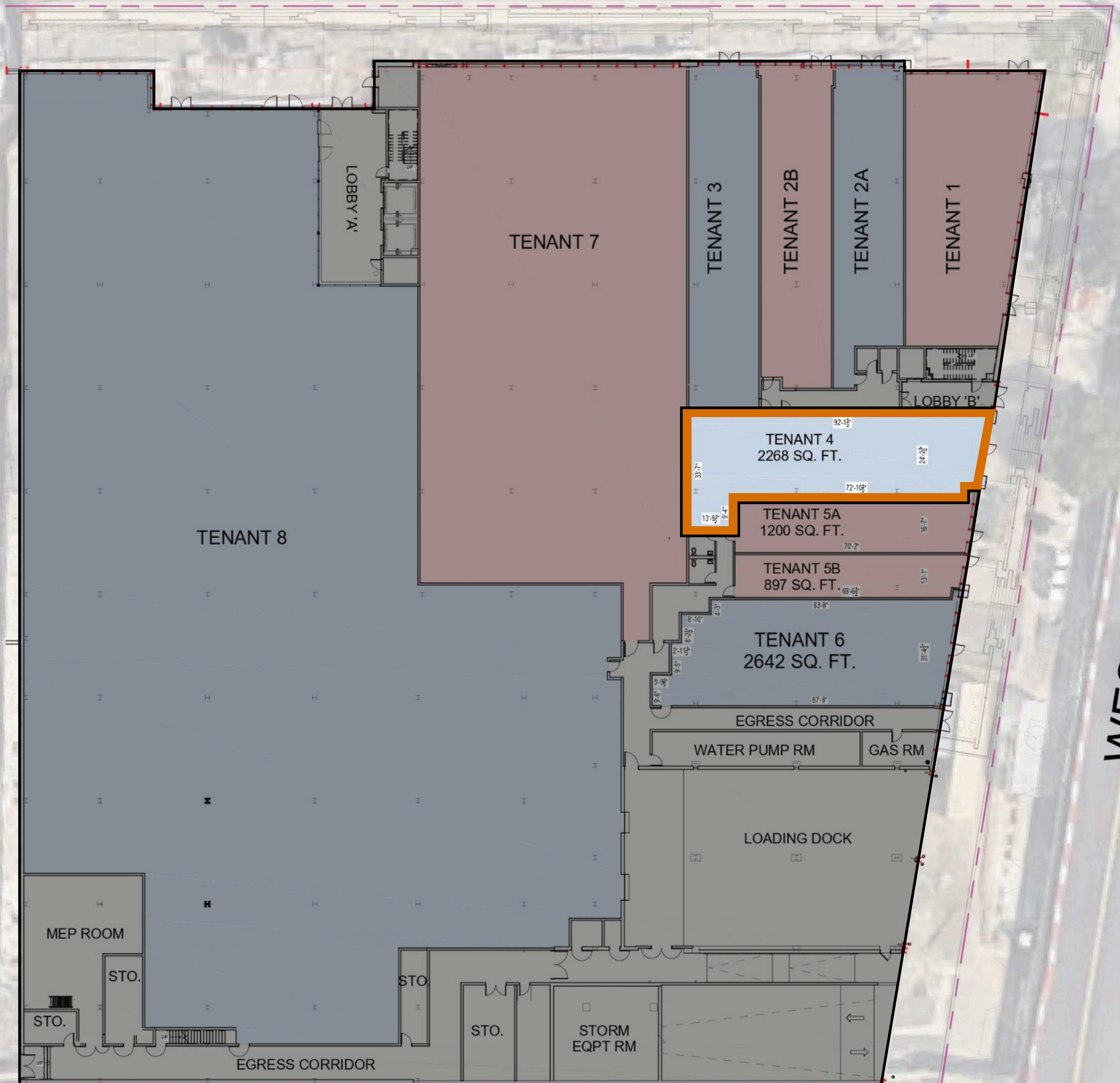
**FOR MORE INFORMATION ON THIS PROPERTY PLEASE CALL OUR OFFICE: 718.517.8700**

COMMERCIAL ACQUISITIONS INC. HAS MADE EVERY EFFORT TO OBTAIN THE INFORMATION REGARDING THESE LISTINGS FROM SOURCES DEEMED RELIABLE. HOWEVER, WE CANNOT WARRANT THE COMPLETE ACCURACY THEREOF SUBJECT TO ERRORS, OMISSIONS, CHANGE OF PRICE, RENTAL OR OTHER CONDITIONS, PRIOR SALE, LEASE OR FINANCING, OR WITHDRAWAL WITHOUT NOTICE. WE RECOMMEND TO THE BUYER THAT ANY INFORMATION, WHICH IS OF SPECIAL INTEREST, SHOULD BE OBTAINED THROUGH INDEPENDENT VERIFICATION. ALL MEASUREMENTS MAY BE APPROXIMATE.



NEPTUNE AVENUE

WEST 5TH STREET



OUT PARCEL



