

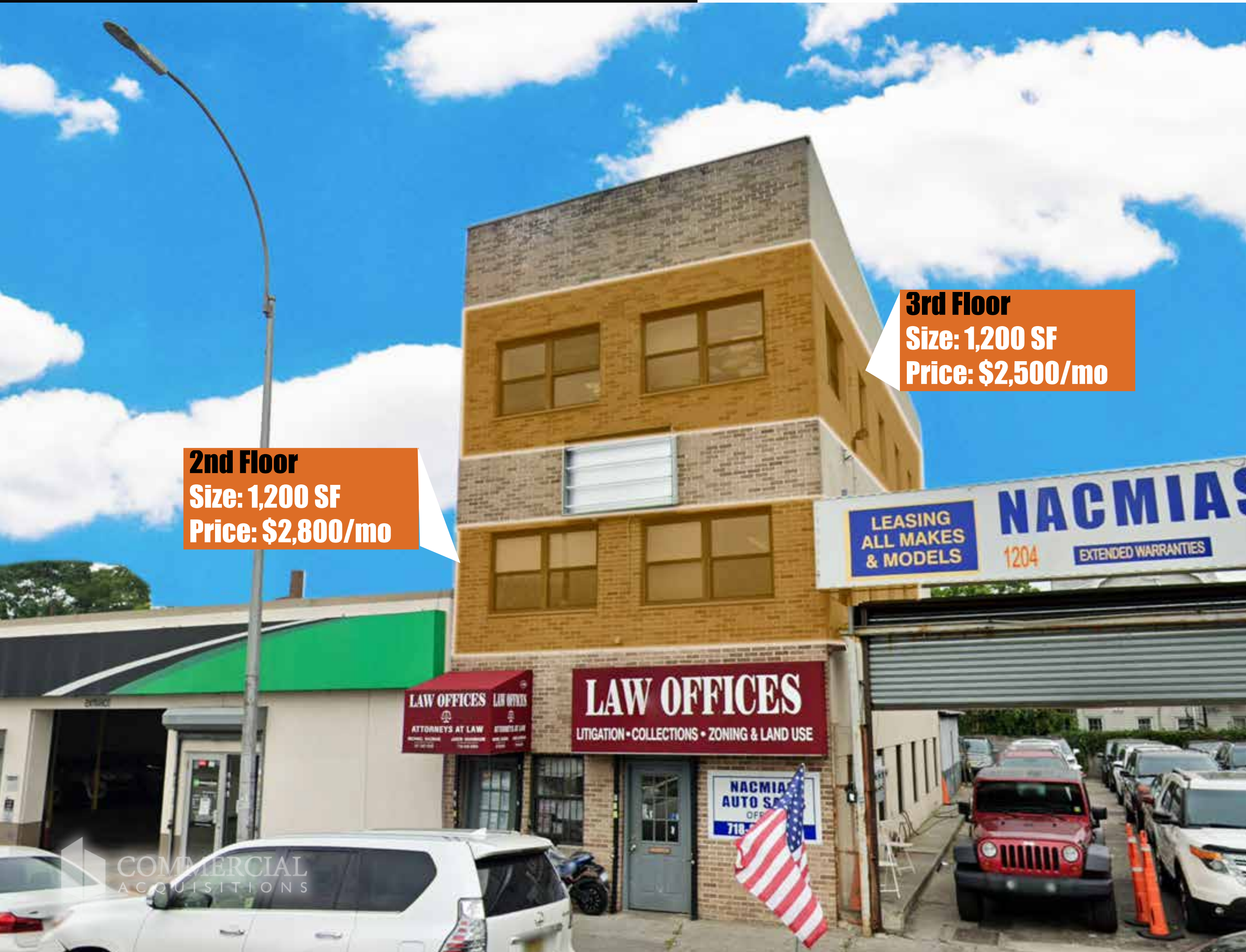
# OFFICE SPACE FOR LEASE

## 1204 CONEY ISLAND AVE

### BROOKLYN, NY 11230



COMMERCIAL  
ACQUISITIONS  
REALTY SERVICES



**2nd Floor**  
Size: 1,200 SF  
Price: \$2,800/mo

**3rd Floor**  
Size: 1,200 SF  
Price: \$2,500/mo

FOR MORE INFORMATION ON THIS PROPERTY PLEASE VISIT: [COMMERCIALACQ.COM](http://COMMERCIALACQ.COM)



# BUILDING DETAILS

## LOCATION INFO

Between Avenue H & Avenue I

**TOTAL SIZE** 2,400 SF

2nd Floor 1,200 SF

3rd Floor 1,200 SF

## BLOCK & LOT

06513-0027

## PRICE

2nd Floor \$2800/Mo

3rd Floor \$2500/Mo

## NEIGHBORHOOD

Midwood

## STORIES

3

## ZONING

C8-2, OP

## TRANSPORTATION

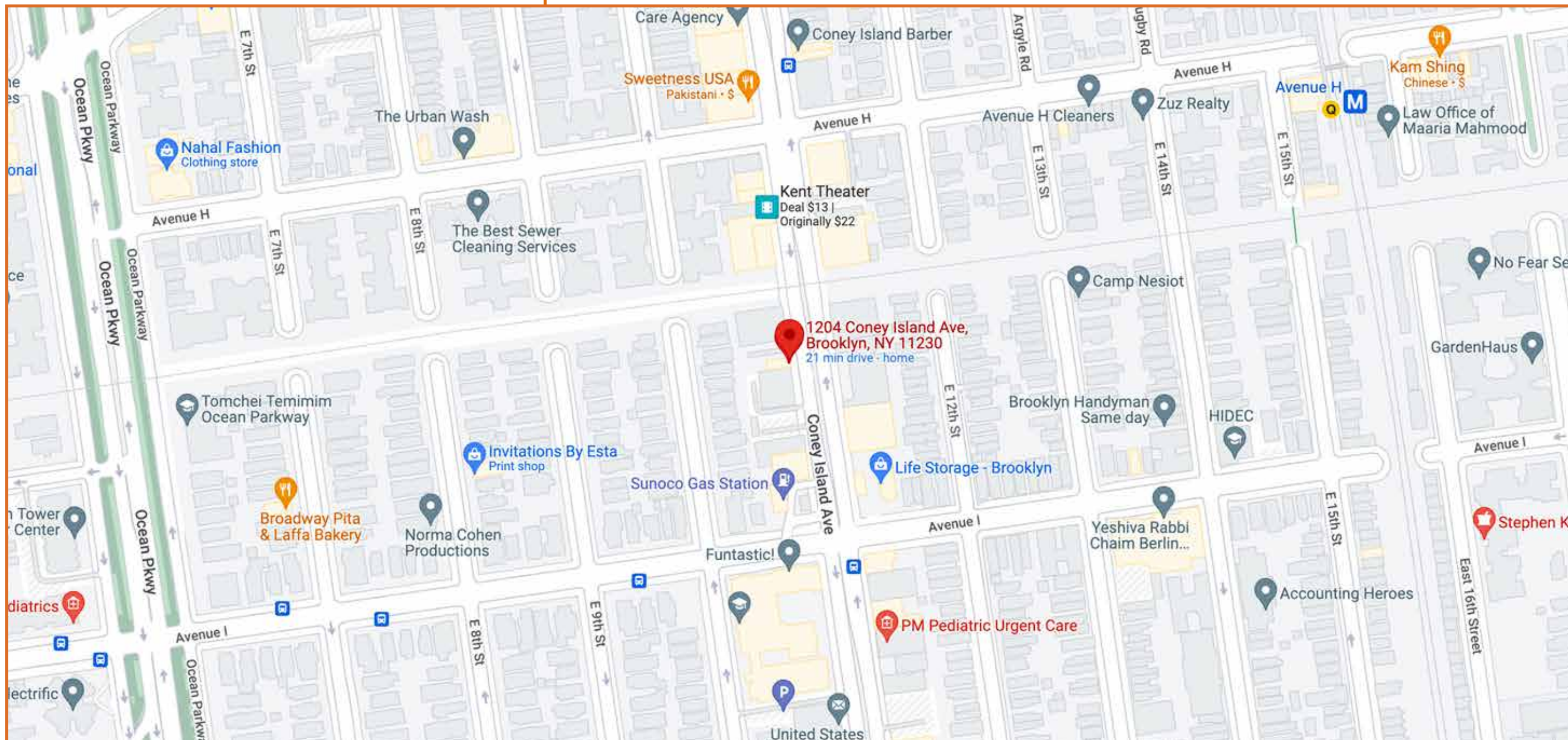


## NEIGHBORING TENANTS

- Enterprise Rent-A-Car
- Chase Bank
- Midwood Lumber
- Life Storage

## COMMENTS

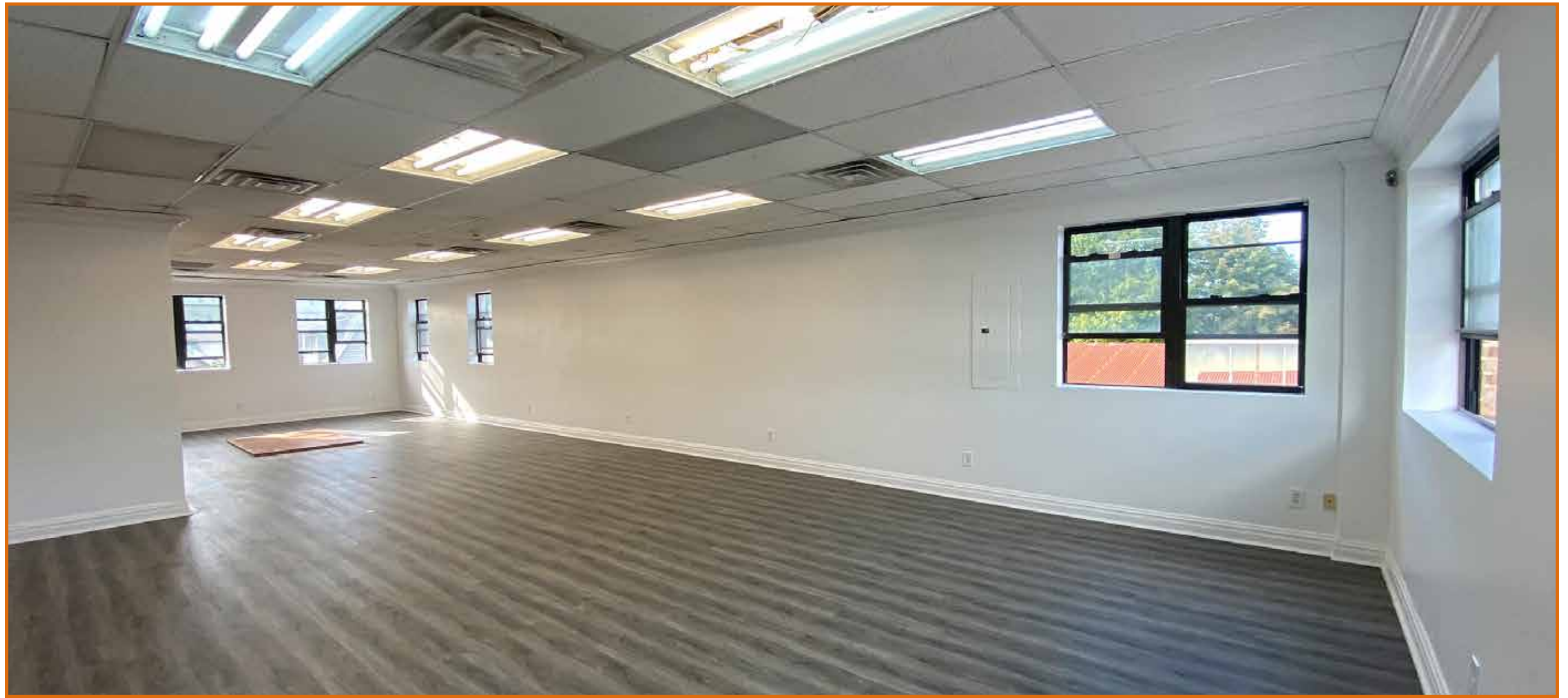
- New Renovated Office Space
- Delivered Vacant



FOR MORE INFORMATION ON THIS PROPERTY PLEASE VISIT: [COMMERCIALACQ.COM](https://COMMERCIALACQ.COM)







**1204 CONEY ISLAND AVE**



**COMMERCIAL**  
ACQUISITIONS  
REALTY SERVICES



**CONTACT EXCLUSIVE BROKER**

**ARSEN ATBASHYAN**

**CELL. 917.939.3760**

**Arsen@CommercialACQ.com**



**FOR MORE INFORMATION ON THIS PROPERTY PLEASE CALL OUR OFFICE: 718.517.8700**

**2500 CONEY ISLAND AVENUE, 2ND FLOOR, BROOKLYN, NY 11223 | 718.513.1889 | ARSEN@COMMERCIALACQ.COM | COMMERCIALACQ.COM**

Commercial Acquisitions Inc. has made every effort to obtain the information regarding these listings from sources deemed reliable. However, we cannot warrant the complete accuracy thereof subject to errors, omissions, change of price, rental or other conditions, prior sale, lease or financing, or withdrawal without notice. We recommend to the buyer that any information, which is of special interest, should be obtained through independent verification. ALL MEASUREMENTS MAY BE APPROXIMATE.