

# RETAIL SPACE FOR LEASE

## 2313 AVENUE U

### MADISON | BROOKLYN, NY



COMMERCIAL  
ACQUISITIONS  
REALTY SERVICES



FOR MORE INFORMATION ON THIS PROPERTY PLEASE CALL OUR OFFICE: 718.517.8700



# DETAILS

## LOCATION INFO

Between E23rd St & E24th St

## SIZE

Ground Floor 2,000 SF  
Basement 2,000 SF

## PRICE

\$5,500 Monthly

## NEIGHBORHOOD

Madison

## BLOCK & LOT

07328-0046

## OVERVIEW

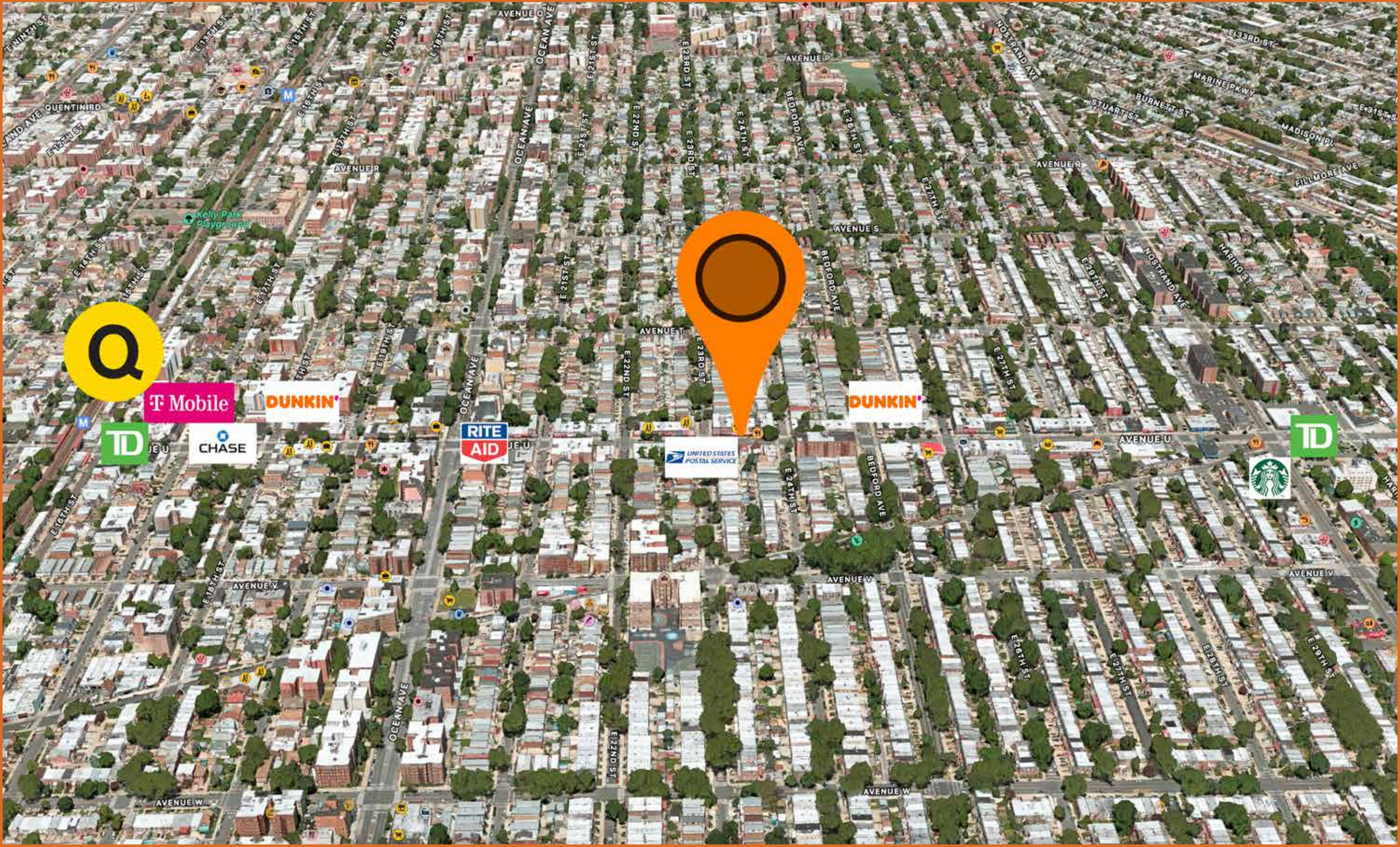
- Updated Store Front
- Full Basement
- High Ceilings
- All Uses Considered

## TRANSPORTATION



## NEIGHBORING TENANTS

- |                |               |
|----------------|---------------|
| - Dunkin       | - Supermarket |
| - USPS         | - Starbucks   |
| - TD Bank      | - T-Mobile    |
| - Supermarkets | - McDonald's  |





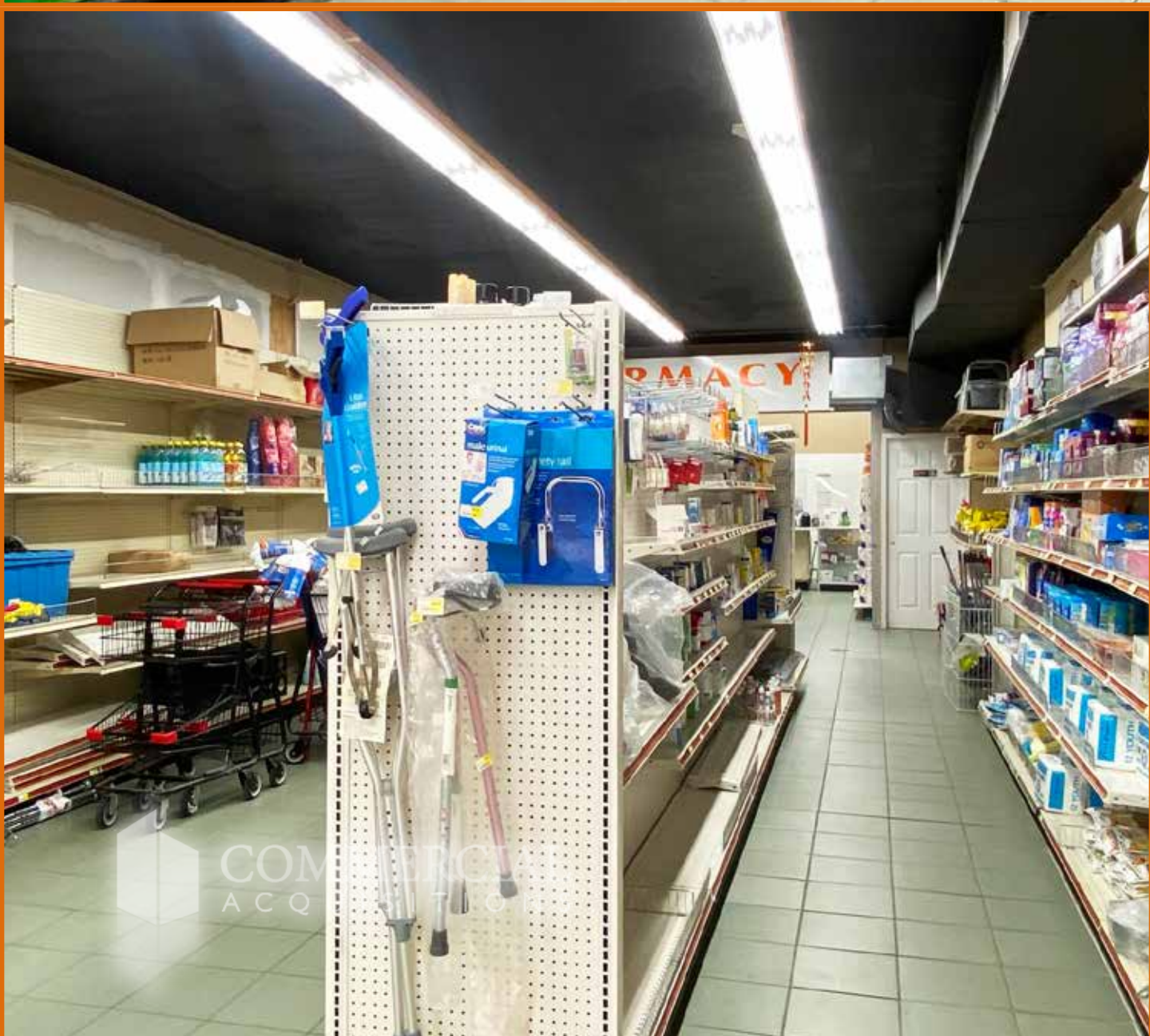
**2313 AVENUE U**



**FOR MORE INFORMATION ON THIS PROPERTY PLEASE CALL OUR OFFICE: 718.517.8700**



2313 AVENUE U



FOR MORE INFORMATION ON THIS PROPERTY PLEASE CALL OUR OFFICE: 718.517.8700



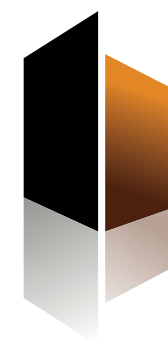
**2313 AVENUE U**



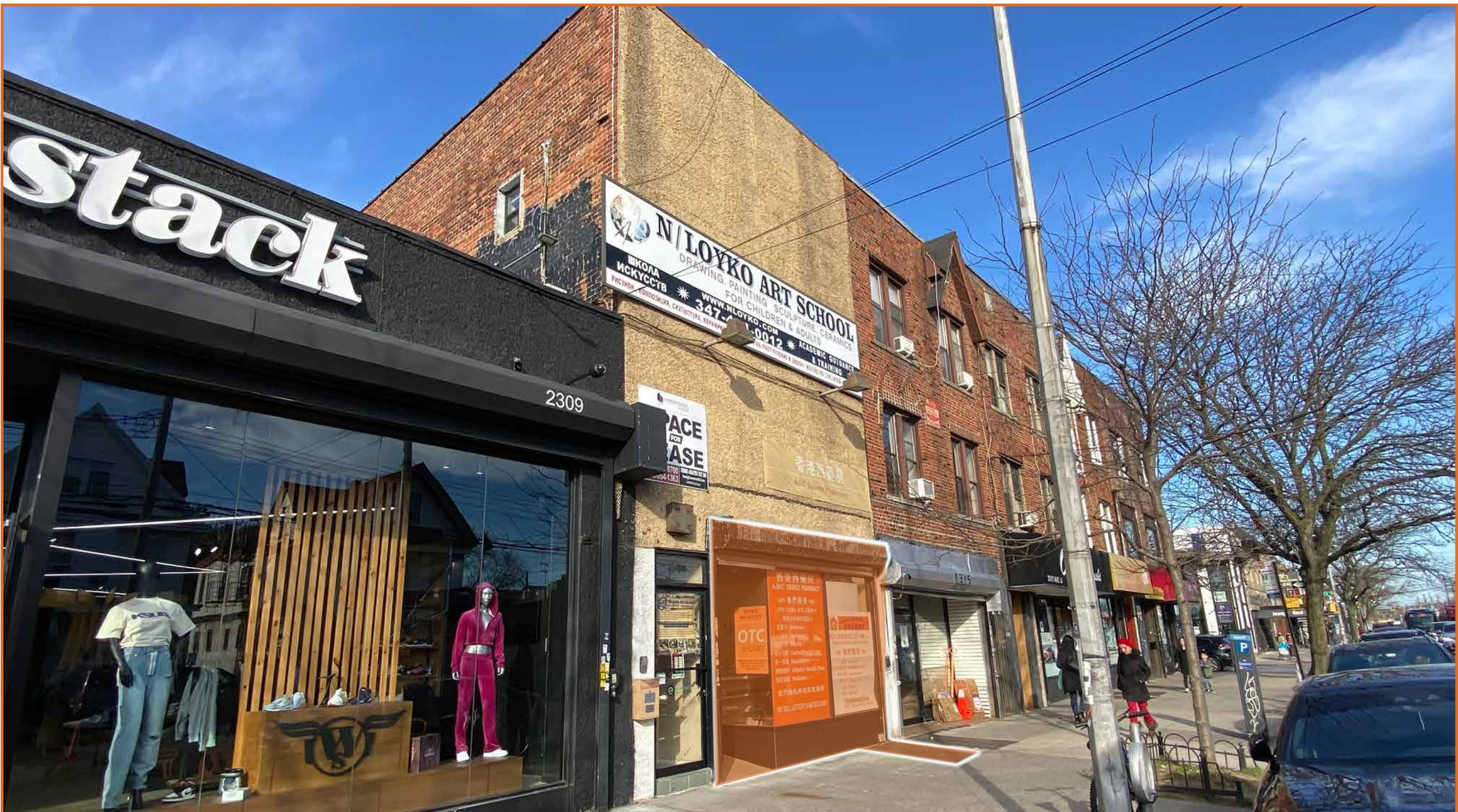
**FOR MORE INFORMATION ON THIS PROPERTY PLEASE CALL OUR OFFICE: 718.517.8700**



**2313 AVENUE U**



**COMMERCIAL**  
ACQUISITIONS  
REALTY SERVICES



**CONTACT EXCLUSIVE BROKER**

**DENIS ABAYEV**

**Denis@CommercialACQ.Com**

**718.954.1363**

**FOR MORE INFORMATION ON THIS PROPERTY PLEASE CALL OUR OFFICE: 718.517.8700**

**2500 CONEY ISLAND AVENUE, 2ND FLOOR, BROOKLYN, NY 11223 | ☎ 718.513.1889 | ✉ DENIS@COMMERCIALACQ.COM | COMMERCIALACQ.COM**

Commercial Acquisitions Inc. has made every effort to obtain the information regarding these listings from sources deemed reliable. However, we cannot warrant the complete accuracy thereof subject to errors, omissions, change of price, rental or other conditions, prior sale, lease or financing, or withdrawal without notice. We recommend to the buyer that any information, which is of special interest, should be obtained through independent verification. ALL MEASUREMENTS MAY BE APPROXIMATE.