

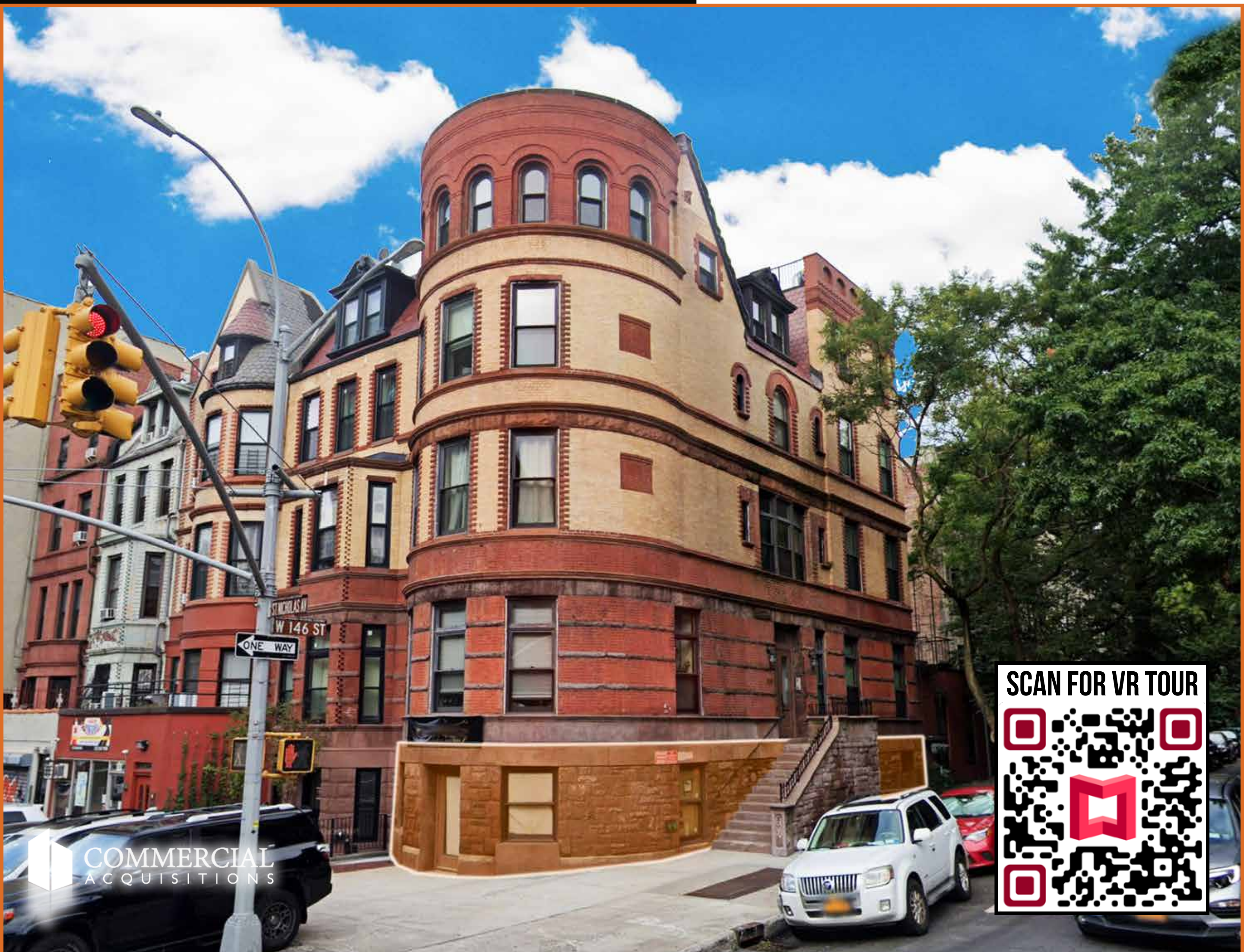
MEDICAL SPACE FOR LEASE

721 ST NICHOLAS AVENUE

New York, NY 10031



COMMERCIAL
ACQUISITIONS
REALTY SERVICES



SCAN FOR VR TOUR



COMMERCIAL
ACQUISITIONS

FOR MORE INFORMATION ON THIS PROPERTY PLEASE CALL OUR OFFICE: 718.517.8700

721 ST NICHOLAS

LOCATION INFO

Between W 145 ST & W 146 ST

SIZE:

1,627 SF

UNIT

Ground Level

PRICE:

Upon Request

NEIGHBORHOOD

Sugar Hill

NOTES

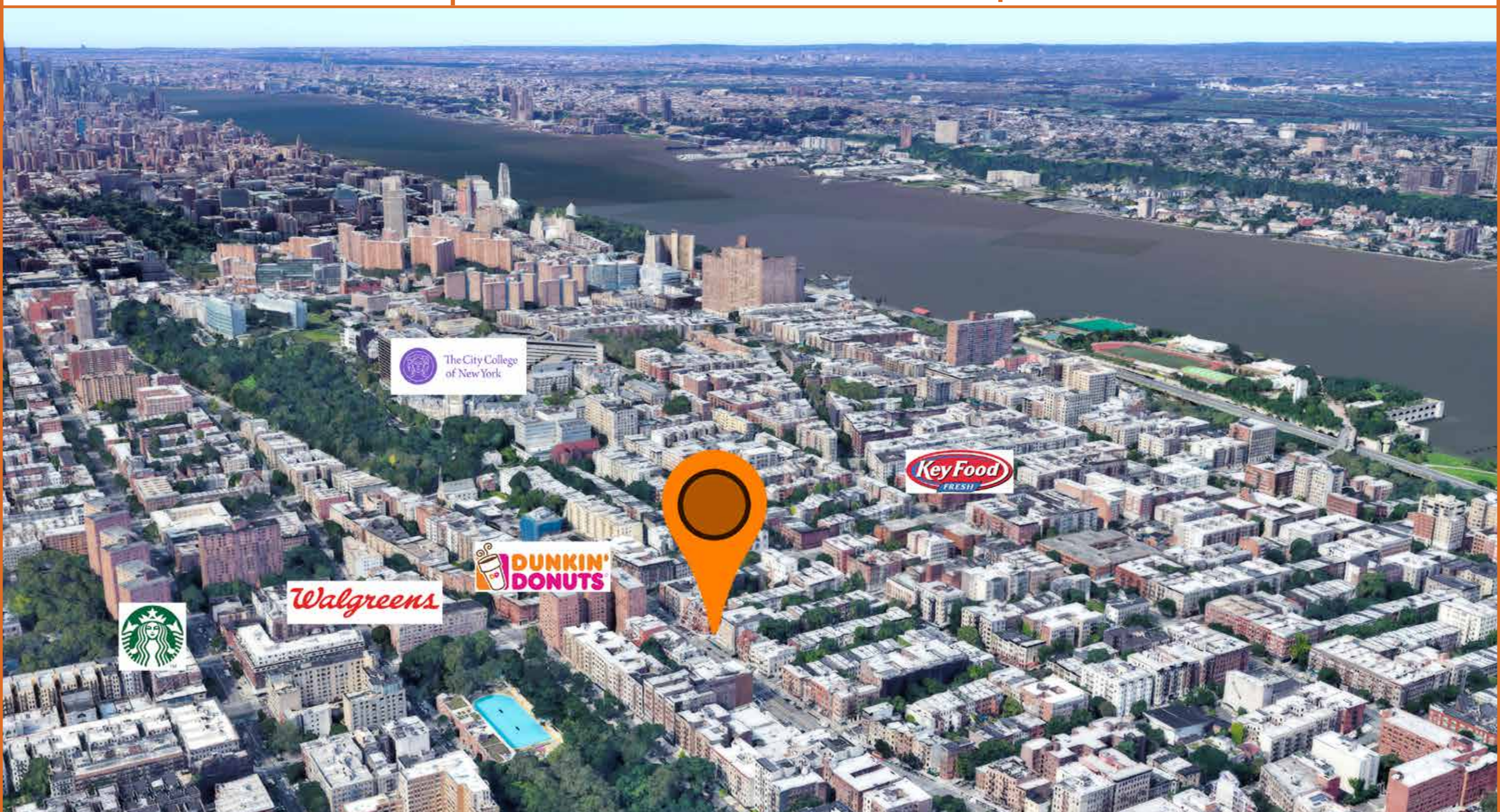
- Turn-Key Medical Build-Out
- ADA Compliant
- Custom Furniture And Finishes
- Central HVAC
- Highly Desirable Brownstone Opportunity

TRANSPORTATION



NEIGHBORING TENANTS

- Checkrs
- Duane Reade
- Dunkin'
- Supermarkets
- Restaurants
- City College of New York



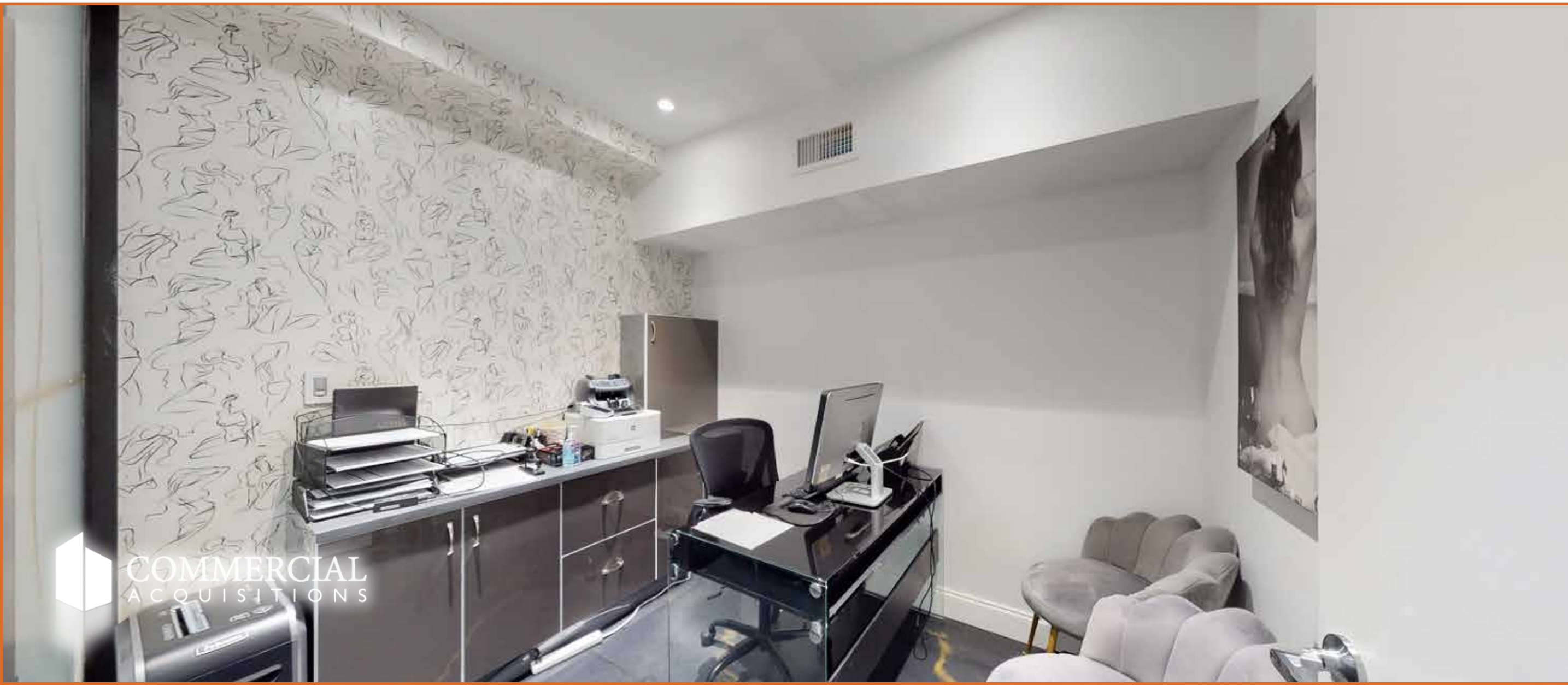
FOR MORE INFORMATION ON THIS PROPERTY PLEASE CALL OUR OFFICE: **718.517.8700**

721 ST NICHOLAS AVE



FOR MORE INFORMATION ON THIS PROPERTY PLEASE CALL OUR OFFICE: **718.517.8700**

721 ST NICHOLAS AVE



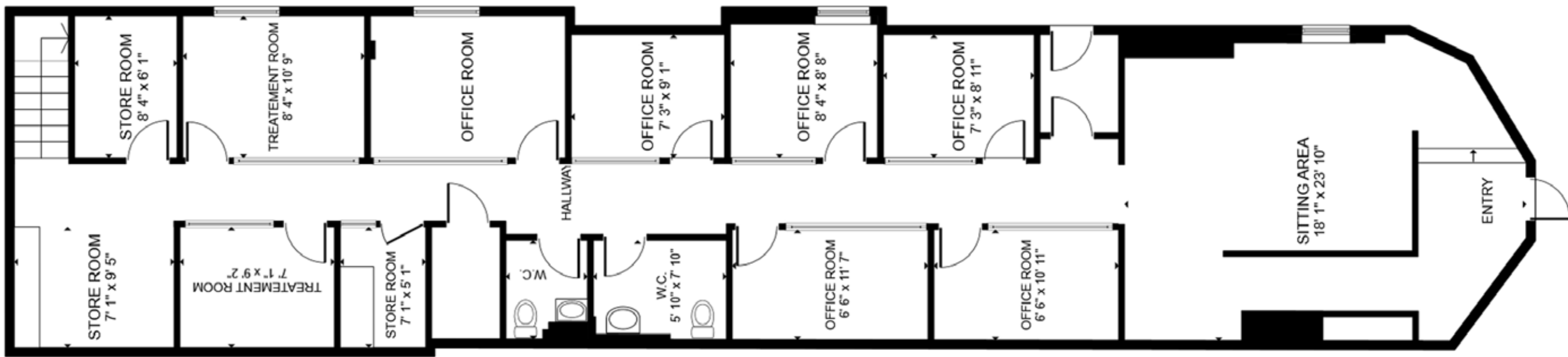
COMMERCIAL
ACQUISITIONS



COMMERCIAL
ACQUISITIONS

FOR MORE INFORMATION ON THIS PROPERTY PLEASE CALL OUR OFFICE: 718.517.8700

721 ST NICHOLAS AVE



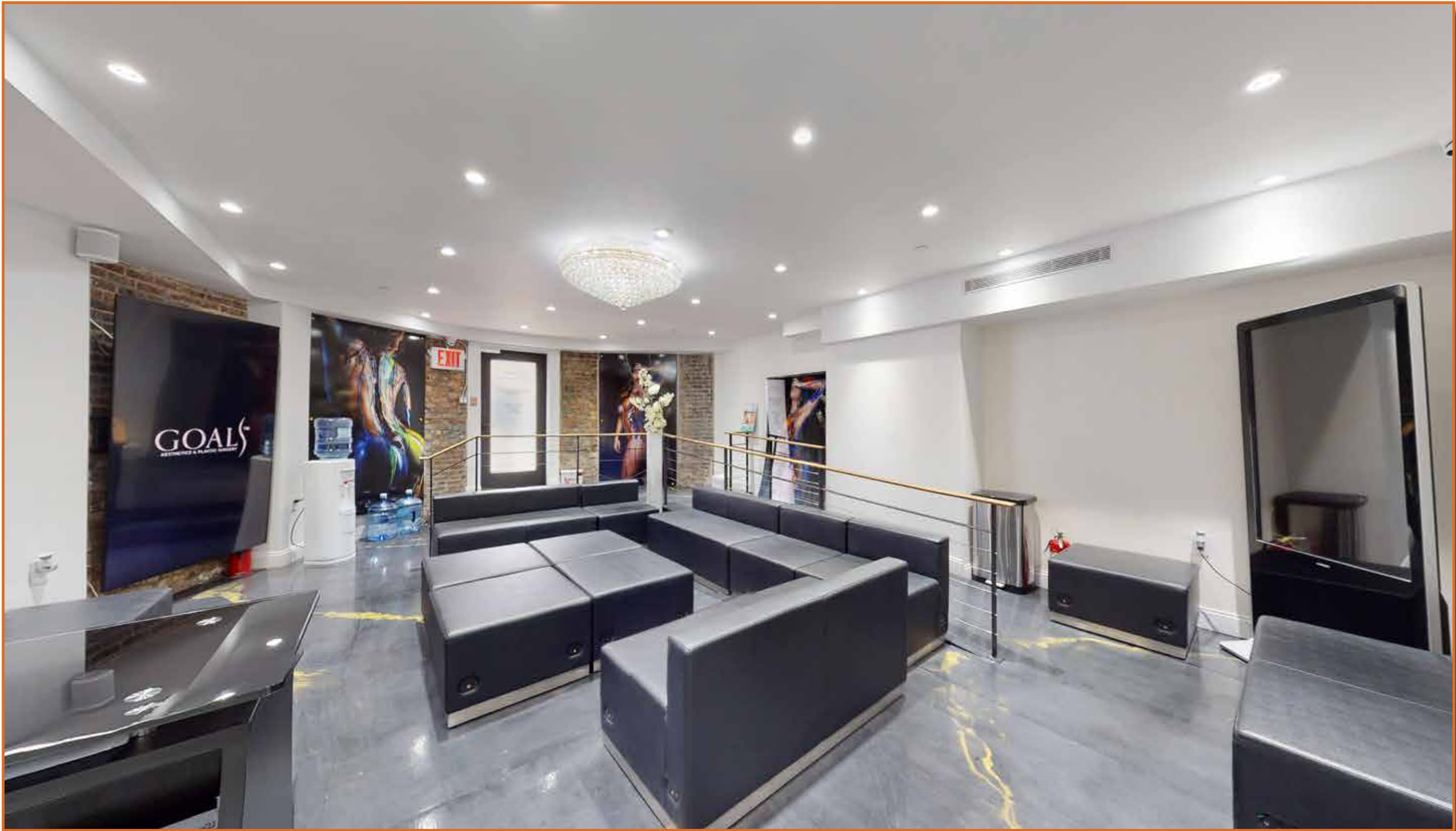
ST NICHOLAS AVE

FOR MORE INFORMATION ON THIS PROPERTY PLEASE CALL OUR OFFICE: **718.517.8700**

721 ST NICHOLAS AVE



COMMERCIAL
ACQUISITIONS
REALTY SERVICES



CONTACT EXCLUSIVE BROKER

ARSEN ATBASHYAN

DIRECT. 917.939.3760

Arsen@CommercialACQ.com

ALLEN ROSENTHAL

DIRECT. 718.640.6777

Allen@CommercialACQ.com

FOR MORE INFORMATION ON THIS PROPERTY PLEASE CALL OUR OFFICE: 718.517.8700

2500 CONEY ISLAND AVENUE, 2ND FLOOR, BROOKLYN, NY 11223 | 718.513.1889 | ARSEN@COMMERCIALACQ.COM | COMMERCIALACQ.COM

Commercial Acquisitions Inc. has made every effort to obtain the information regarding these listings from sources deemed reliable. However, we cannot warrant the complete accuracy thereof subject to errors, omissions, change of price, rental or other conditions, prior sale, lease or financing, or withdrawal without notice. We recommend to the buyer that any information, which is of special interest, should be obtained through independent verification. ALL MEASUREMENTS MAY BE APPROXIMATE.